

Description

The RCC-1011 and RCC-1111 multiple input selector relays are designed for selection of the lowest and/or highest of 6 different pneumatic inputs.

They are restricted devices designed for pilot-duty operation. If a large output volume is required, use a volume booster relay. For applications requiring a "low" output, the integral selector valve must be set for the correct number of inputs. If a "high" output is required, this dial does not need be set.

The RCC-1011 can be mounted in-line and the RCC-1111 can be mounted using the included right angle bracket.



Features

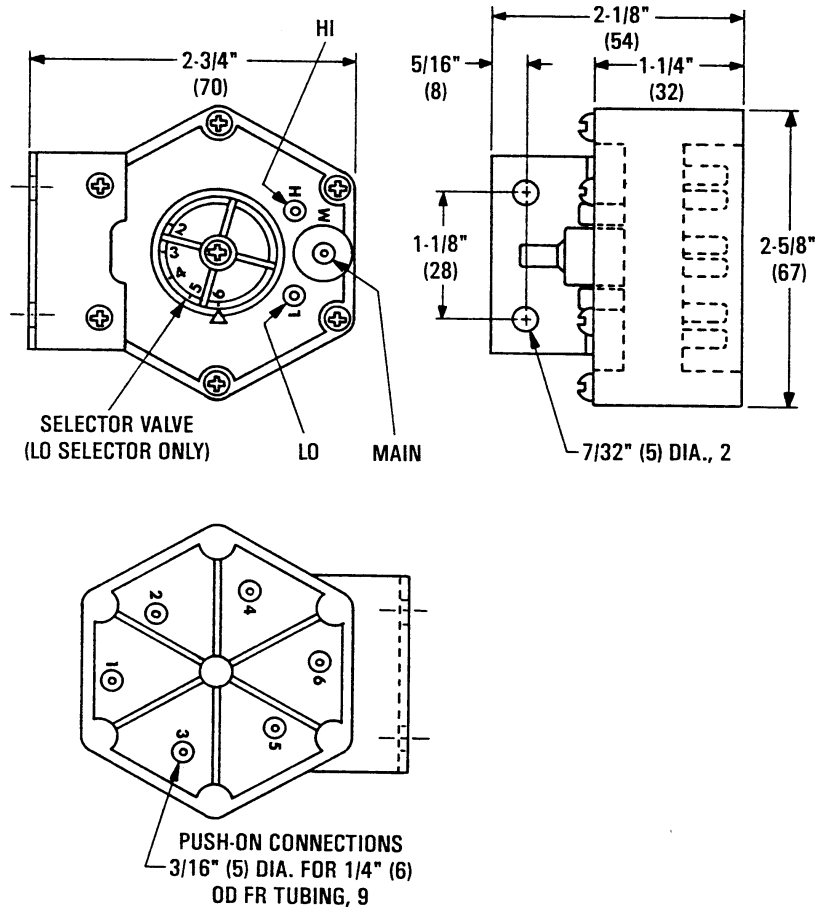
- ◆ Designed for pilot-duty operation
- ◆ Selects the lowest and/or highest of up to 6 different pneumatic inputs
- ◆ May be mounted in-line or with a right angle bracket.

Models

RCC-1011	6 Input high/low selector relay
RCC-1111	6 Input high/low selector relay with bracket

Details

All dimensions in inches (mm).



Specifications

Supply Pressure	20 psig (138 kPa) 30 psig (207 kPa) maximum
Air Consumption	28.8 scim (7.85 mL/s)
Connection	3/16" (5mm) nipple for 1/4" (6 mm) OD polyethylene tubing
Material	ABS, UL Flame Class 94HB
Weight	RCC-1011 3 oz. (85 grams) RCC-1111 3.5 oz. (99 grams)
Temperature Limits	
Operating	40° to 120° F (4 to 29° C)
Shipping	-40° to 140° F (-40° to 60° C)

!CAUTION

Pneumatic devices MUST operate with CLEAN, DRY, control air. Any other medium will result in the device's eventual failure.

KMC Controls, Inc.
19476 Industrial Drive
New Paris, IN 46553
574.831.5250
www.kmcccontrols.com