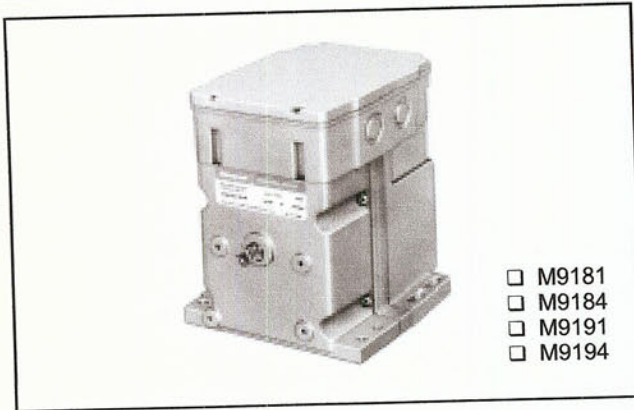


## M9181, M9184, M9191, M9194 Modutrol IV™ Motors

### SPECIFICATION DATA



### APPLICATION

These Modutrol® Motors are reversing, proportional motors used to operate valves or dampers in electric (Series 90) modulating circuits.

### FEATURES

- Replace M944A,C,D; M954 Motors.
- Oil immersed motor and gear train for reliable performance and long life.
- Wiring box provides NEMA 3 weather protection.
- Quick-connect terminals standard—screw terminal adapter available.
- Adapter bracket for matching shaft height of older motors is standard with replacement motors.
- Die-cast aluminum housing.
- Integral auxiliary switches are available factory mounted or can be field added to TRADELINE® models.
- Field addable interface modules can be mounted in wiring box to upgrade actuator to Series 70 (electronic) control.
- Models available with tapped output shaft.

EPRI Edgemont Precision Rebuilders, Inc  
Matlack Industrial Center  
207 Carter Dr Unit C  
West Chester, PA 19382  
800-356-3774



## SPECIFICATIONS

### TRADELINE® Models

TRADELINE models are selected and packaged to provide ease of stocking, ease of handling, and maximum replacement value. TRADELINE model specifications are the same as those of standard models unless otherwise specified. M9184D1013, M9184D1021(with tapped shaft) and M9194D1003 are TRADELINE models. TRADELINE models have auxiliary switch cams.

#### Standard Models:

M9181A,B,C,D  
M9184A,B,C,D,E,F  
M9191D  
M9194C,D,E

**Control Type**  
91 is Series 90

**Power Rating**  
8 is high torque:  
150 lb-in. at  
standard timing  
(60 sec for 160°)  
9 is extra high torque:  
300 lb-in. at 2 or 4  
minute timing

**Output Drive**  
4 is dual-ended shaft,  
non-spring return  
1 is single-ended shaft,  
non-spring return

#### Suffix Letter

- A:** Fixed stroke (90° or 160°),  
No auxiliary switches  
**B:** Fixed stroke (90° or 160°),  
1 auxiliary switch  
**C:** Fixed stroke (90° or 160°),  
2 auxiliary switches  
**D:** Adjustable stroke (90° to 160°),  
No auxiliary switches  
**E:** Adjustable stroke (90° to 160°),  
1 auxiliary switch  
**F:** Adjustable stroke (90° to 160°),  
2 auxiliary switches

**NOTE:** Some motors furnished to HVAC equipment manufacturers have no adapter bracket, a single-ended shaft and/or no wiring box.

#### Electrical Ratings:

M9181, M9184, M9191, M9194	Voltage (V at 50/ 60 Hz)	Current Draw (A)	Power Consump- tion (W)
Without Transformer <sup>a</sup>	24	0.8	18
With Internal Transformer	120	0.24	23
	208	0.14	23
	240	0.12	23

<sup>a</sup> Internal transformer can be field added.

#### Controller Type:

Series 90 Control Circuit—135 ohm, Series 90 proportioning controller. Series 90 high or low limit controller with manual minimum position potentiometer (with a combined total resistance of up to 500 ohms) can also be used in the control circuit.

#### Motor Rotation:

Normally closed. The closed position is the limit of counterclockwise rotation as viewed from the power end of the motor. Motor opens clockwise (as viewed from the power end). These motors are shipped in the closed position.

#### Stroke:

Fixed stroke models available with 90° or 160° stroke. Other models available with stroke field adjustable from 90° to 160°. Start position of shaft changes with adjustment of stroke. Stroke is adjusted by using cams located in wiring compartment.

#### Maximum Damper Rating:

Motor Torque lb-in.	B dim	
	in.	mm
75	100	2540
150	202	5131
300	258	6553

#### Dead Weight Load on Shaft:

Power or Auxiliary End: 200 lb (90.8kg) maximum.  
Maximum Combined Load: 300 lb (136 kg).

#### Ambient Temperature Ratings:

Maximum: 150°F (66°C) at 25% duty cycle.  
Minimum: Minus 40°F (-40°C).

#### Crankshaft: 3/8 in. (9.5 mm) Square.

M9184, M9194 have dual-ended shaft.  
M9181, M9191 have single-ended shaft.

#### Auxiliary Switch Ratings (Amperes):

One Contact Rating <sup>a</sup> Amps	120V	240V
Full Load	7.2	3.6
Locked Rotor	43.2	21.6

<sup>a</sup> 40 VA pilot duty, 120/240 Vac on opposite contact.

#### Dimensions:

See Fig. 1.

#### Underwriters Laboratories Inc. Listed:

File No. E4436, Guide No. XAPX.

#### Canadian Standards Association Certified:

General listing File No. LR1620, Guide 400-E.

#### Timing and Torque:

**NOTE:** Motors with 2 minute timing at 90° stroke or 4 minute timing at 160° stroke contain on-off pulsing circuitry to achieve timing. Intermittent operation is normal.

Model	Timing		Torque in lb.-in (N•m)	
	90° Stroke Motors	160° Stroke Motors	Normal Running	Break- away <sup>a</sup>
M9181, M9184	15 sec 30 sec	30 sec 1 min	75 (8.5) 150 (17.0)	150 (17.0) 300 (34.0)
M9191, M9194	1,2 sec <sup>b</sup>	2,4 min <sup>b</sup>	300 (34.0)	600 (68.0)

<sup>a</sup> Breakaway torque is the maximum torque available to overcome occasional large loads such as a seized damper or valve. Motor must not be used continuously at this rating.

<sup>b</sup> Stalling of 2 or 4 minute motor will damage motor.

EPRI Edgemont Precision Rebuilders, Inc  
Matlack Industrial Center  
207 Carter Dr Unit C  
West Chester, PA 19382  
800-356-3774

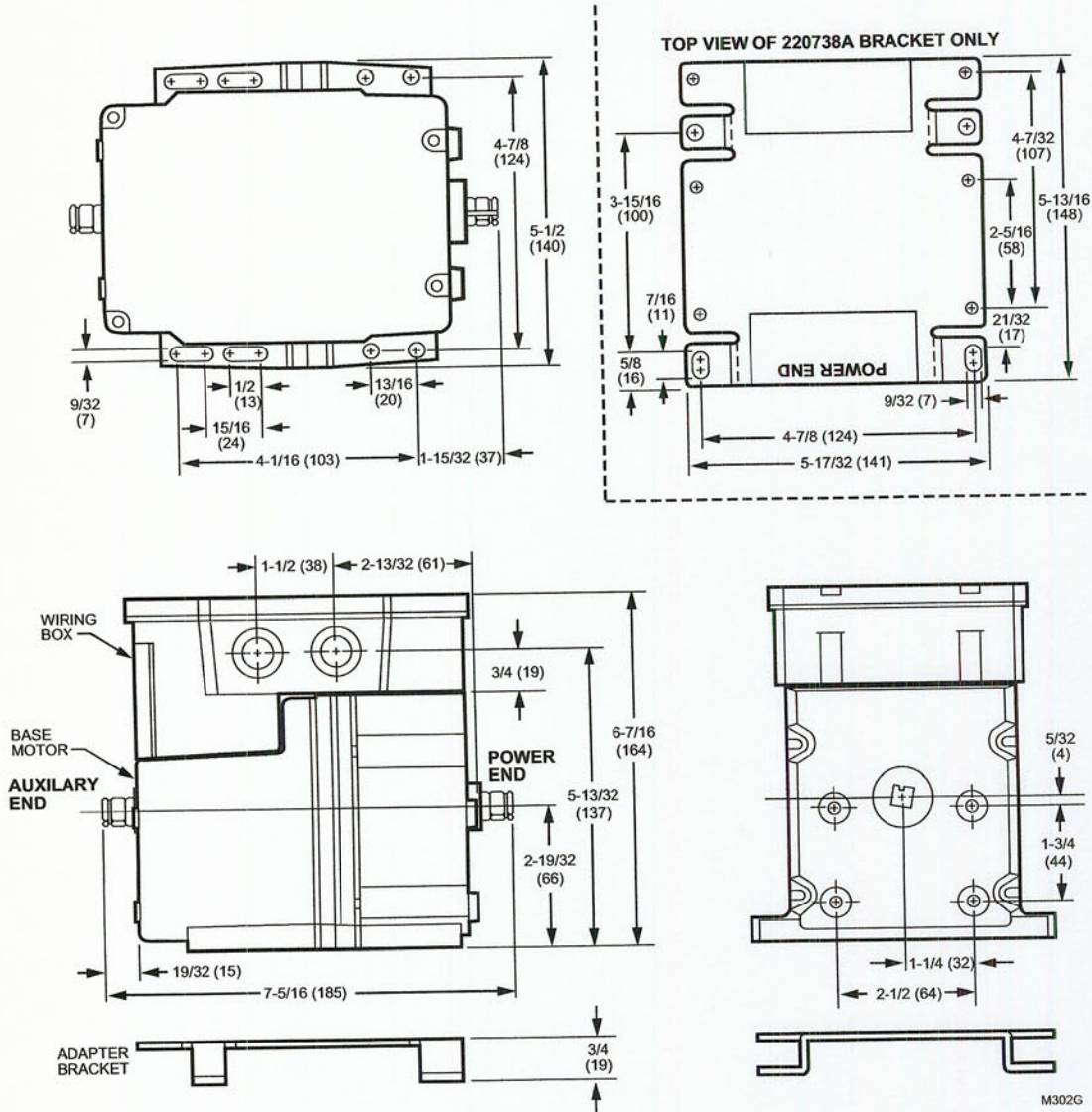


Fig. 1. M9184, M9194 mounting dimensions in in. (mm).  
 NOTE: M9181, M9191 does not have auxiliary shaft. All other dimensions are the same.

**Home and Building Control**  
 Honeywell Inc.  
 Honeywell Plaza  
 P.O. Box 524  
 Minneapolis MN 55408-0524

**Honeywell Latin American Division**  
 Miami Lakes Headquarters  
 14505 Commerce Way Suite 500  
 Miami Lakes FL 33016

EPRI Edgemont Precision Rebuilders, Inc  
 Matlack Industrial Center  
 207 Carter Dr Unit C  
 West Chester, PA 19382  
 800-356-3774  
 Toronto, Ontario  
 M2H 2C9

**Honeywell Europe S.A.**  
 3 Avenue du Bourget  
 B-1140 Brussels Belgium

**Honeywell Asia Pacific Inc.**  
 Room 3213-3225  
 Sun Hung Kai Centre  
 No. 30 Harbour Road  
 Wanchai  
 Hong Kong

**Honeywell**

Helping You Control Your World

**Accessories:**

- ES650117 Explosion-proof Housing: Encloses motor for use in explosive atmospheres. Not for use with Q601, Q618, and Q455 Linkages. Order separately from Nelson Electric Co. Requires Honeywell 7617DM Coupling.
- Q607 External Auxiliary Switch: Controls auxiliary equipment as a function of motor position.
- Internal Auxiliary Switch Kits: Can be field-installed on TRADELINE models.
- 220736A—One-switch Kit.
- 220736B—Two-switch Kit.
- Q605 Damper Linkage: Connects motor to damper. *Includes motor crank arm.*
- Q618 Linkage: Connects Modutrol motor to water or steam valve.
- Q601 Bracket and Linkage Assembly: Connects Modutrol motor to water or steam valve.
- Q100A,B Linkage: Connects Modutrol motor to butterfly valve.
- Q209E,F Potentiometer: Limits minimum position of motor.
- Q68 Dual Control Potentiometer: Controls 1 to 9 additional motors.
- Q181 Auxiliary Potentiometer: Controls 1 or 2 additional motors.
- 221455A Infinitely Adjustable Crank Arm: Approximately 0.75 inch (19 mm) shorter than the 4074ELY Crank Arm. Can rotate through downward position and clear base of motor without requiring use of adapter bracket.
- 7617ADW Adjustable Crank Arm: Approximately 0.75 inch (19 mm) shorter than the 7616BR Crank Arm. Can rotate through the downward position and clear base of motor without requiring use of adapter bracket.
- 220741A Screw Terminal Adapter: Converts the standard quick-connect terminals to screw terminals.
- Transformers—Mounted internally, provide 24 Vac power to motor.
- 198162JA—24 Vac; 50/60 Hz (for electrical isolation).
- 198162EA—120 Vac; 50/60 Hz.
- 198162GA—220 Vac; 50/60 Hz.
- 198162AA—120/208/240 Vac; 50/60 Hz.
- Q7130A: Interface Module with selectable voltage ranges (4-7 Vdc, 6-9 Vdc, and 10.5-13.5 Vdc). Adapts motor to M71XX function.
- Q7230A: Interface Module, selectable 2-10 Vdc voltage or 4-20 mA current control, with adjustable null and span. Adapts motor to M72XX function.
- Q7330A: Interface Module, for W936 Economizer applications. Adapts motor to M73XX function.
- Q7630A: Interface Module, 14-17 Vdc control with minimum position capability. Adapts motor to M76XX function.
- 4074BYK: Controls up to 6 M91XX motors in unison from one Series 90 Controller.
- 4074EAU: Drives 2 or 3 M91XX motors from a W973 Single-zone Logic Panel or W7100 Discharge Air Controller.
- 4074EDC: Drives one M91XX motor from a 4-20 mA controller.
- 4074EED: Drives up to 4 M91XX motors from a 4-20 mA controller.
- 221508A Resistor Board: Plugs onto quick-connect terminals in wiring box of M91XX motor. Can be used in place of 4074BYK, EAU, EDC, or EED resistor kits (functions described above).

EPRI Edgemont Precision Rebuilders, Inc  
 Matlack Industrial Center  
 207 Carter Dr Unit C  
 West Chester, PA 19382  
 800-356-3774